

Email: orders@adpaustralia.com.au | Phone: (02) 4271 2444

Store:	Order Date:
Store Contact Name:	Purchase Order Number:
Store Phone Number:	Quote Number: (If applicable)

Notes:

Size & Configuration

600 Centre Bowl	1500 Centre Bowl
750 Centre Bowl	1500 Left Offset Bowl
750 Left Offset Bowl	1500 Right Offset Bowl
750 Right Offset Bowl	1500 Double Bowl
900 Centre Bowl	1800 Centre Bowl
900 Left Offset Bowl	1800 Left Offset Bowl
900 Right Offset Bowl	1800 Right Offset Bowl
1200 Centre Bowl	1800 Double Bowl
1200 Left Offset Bowl	
1200 Right Offset Bowl	
1200 Double Bowl	

Please note: For 1200, 1500 and 1800 models the Power Point comes standard in the bottom right hand drawer unless otherwise requested.

Please see the next page for U-Shoe type and accessories for each vanity configuration.

Cabinet Finish - Matte Polyurethane Only

- Matte White
- Matte Feather Grey
- Matte Black

OR

Custom Colour (surcharge applies)

Paint Colour:

40mm Manor Benchtop Finish

- Cherry Pie
- Durasein
- Caesarstone Mineral

Colour:

Handle

(Excludes Francis, Aria & Blaze. Please refer to ADP website for handle suitability)

Handle Name:

Handle Finish: Handle Size:

Please note: premium handles are included at no extra charge

Basin

Please refer to the ADP website for compatibility.

Above-Counter / Semi-Inset / Inset / Under Counter Basins

Product Code:

Product Name:

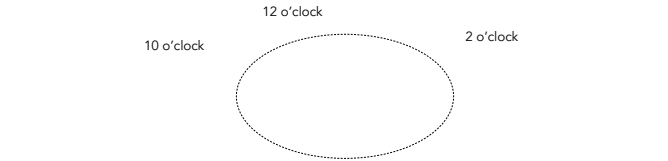
Tap Hole Location

0 tap hole - please specify:

Drilling ownWall TapsIn basin

3 tap holes

1 tap hole - please specify location:



Plug & Waste Colour

- | | |
|-------------------------------|----------------------------------|
| Chrome (supplied with vanity) | Brushed Nickel (additional cost) |
| Gloss White (additional cost) | Brushed Brass (additional cost) |
| Matte White (additional cost) | Brushed Copper (additional cost) |
| Matte Black (additional cost) | |

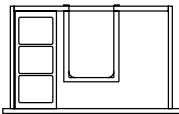
Disclaimer:

I understand that this is a made to order product. The manufacturing process of this product will commence within 24 hours of receipt, therefore we are unable to accept alterations or cancellation after 24 hours. **This order form is for store use only**

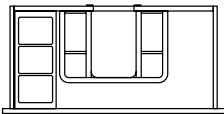
Customer Signature Date

Como Storage & U-Shoe Configurations

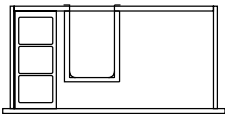
600 Centre



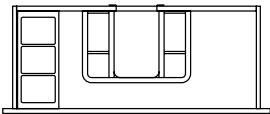
750 Centre



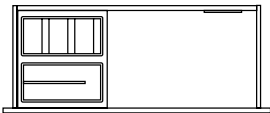
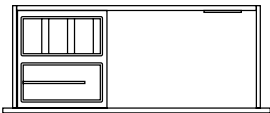
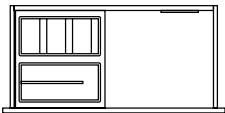
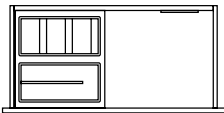
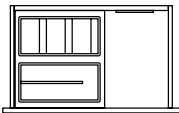
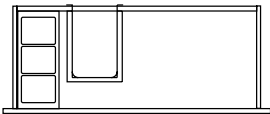
750 Offset



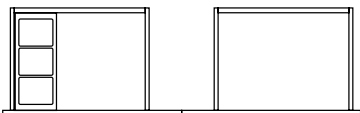
900 Centre



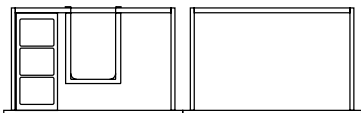
900 Offset



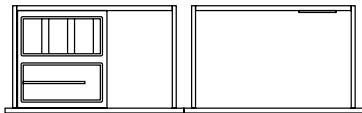
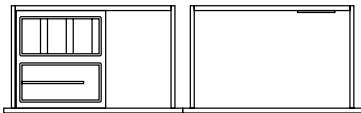
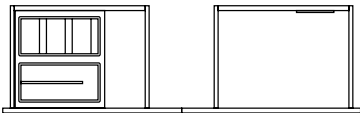
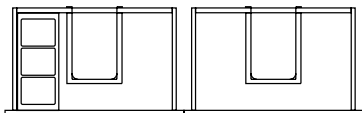
1200 Centre Double Drw



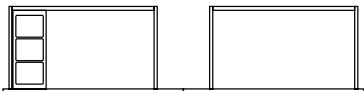
1200 Offset Double Drw



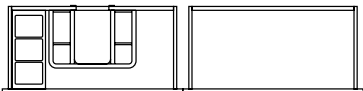
1200 Double Double Drw



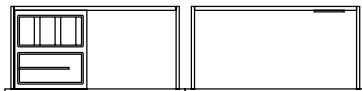
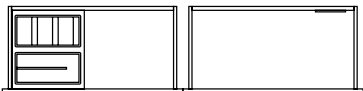
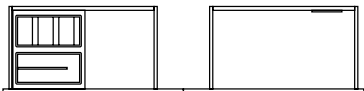
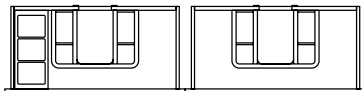
1500 Centre



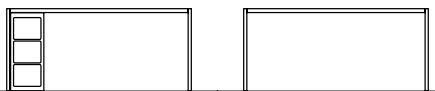
1500 Offset



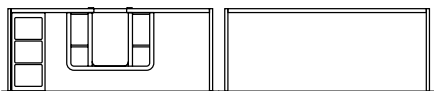
1500 Double



1800 Centre



1800 Offset



1800 Double

