

# Eternal.



Products in this manual must by regulation be installed by licensed and registered trade people.



## Water supply requirements

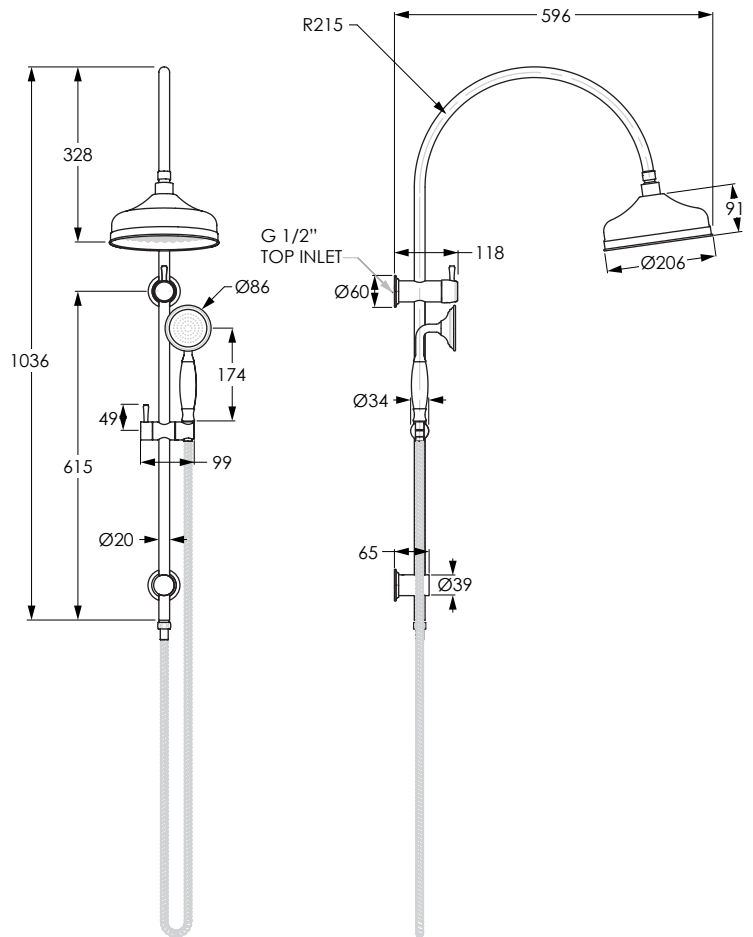
Not recommended for gravity fed water systems or water tanks.

**Working Pressure:** 350 – 500kpa (including cold and hot water pressure)

**Maximum Pressure:** 73psi / 500kpa

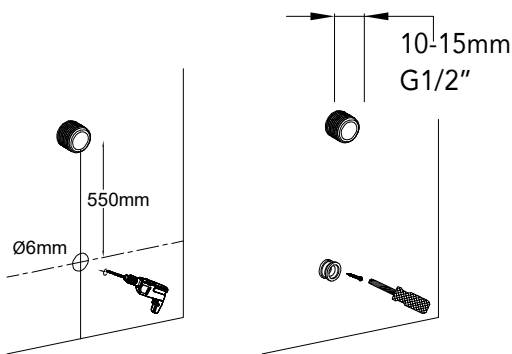
**Temperature Rating:** 5°C - 65°C (must not exceed 70°C)

Installation should comply with Australian standard AS/NZS 3500 or relevant local authority requirements.

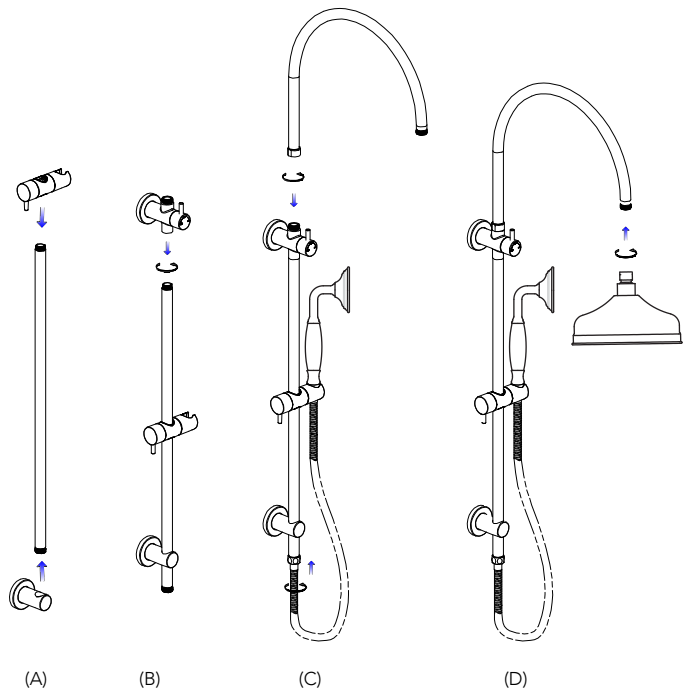
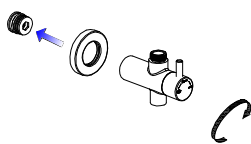


## Installation Guide: Twin Shower Set

1. Drill 550mm below wall thread and screw in wall bracket.



2. Apply thread tape and screw on diverter valve.



3.

- (A) Assemble slider onto rail and guide rail through bottom wall bracket.
- (B) Screw the top of rail into diverter valve.
- (C) Screw on the overhead arm and attach flexible hose and handshower.
- (D) Screw on the shower head.