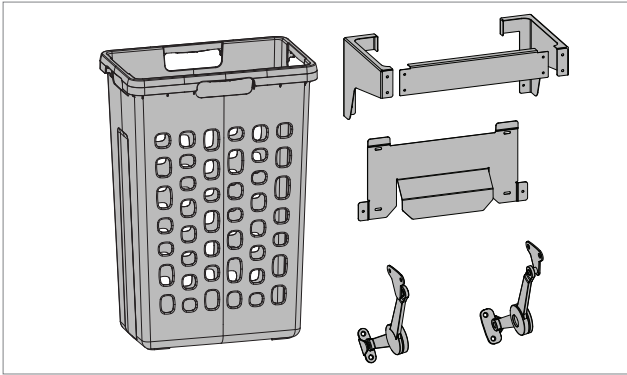


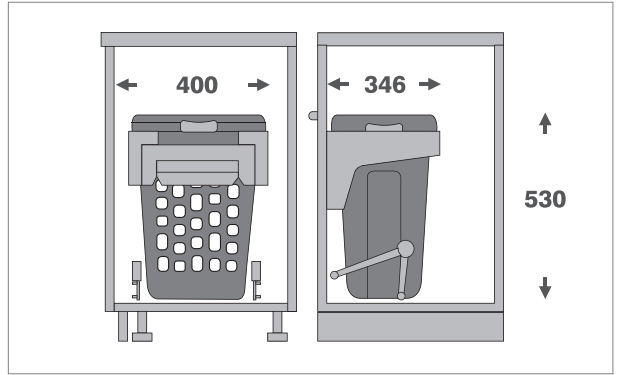


# HAMPER INSTALLATION & ADJUSTMENTS

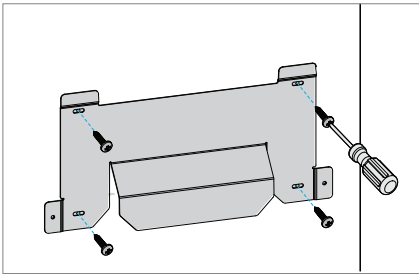
## PARTS INCLUDED



## OVERALL DIMENSIONS

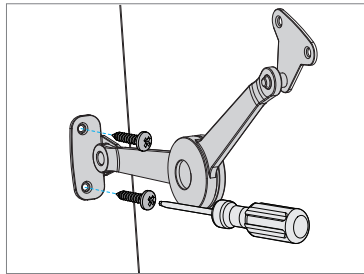


## BRACKET



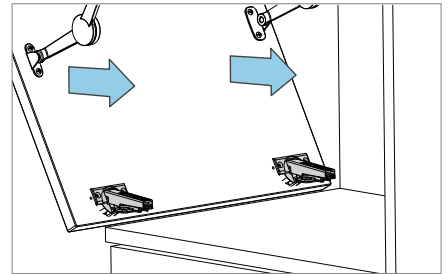
Screw bin tray bracket to the door.

## ARMS



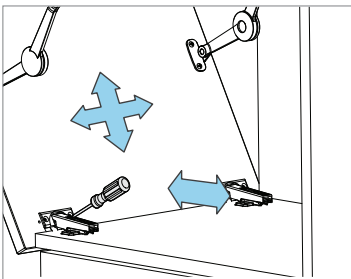
Screw both soft close arms to door.

## HINGES



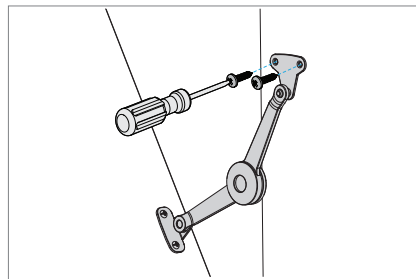
Mount the hinges to the door as per the instructions on previous page (page 20).

## ADJUSTMENTS



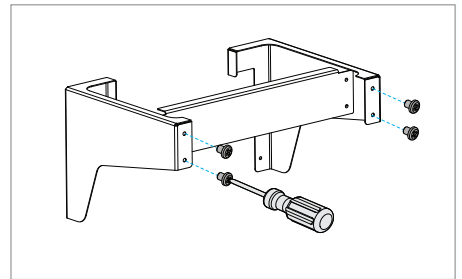
Make door adjustments using the lower hinges.

## ATTACH ARMS



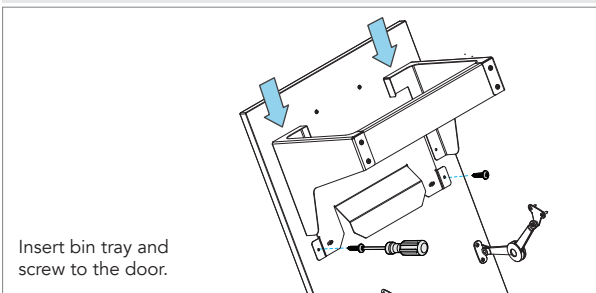
Screw both soft close arms to cabinet.

## ASSEMBLY



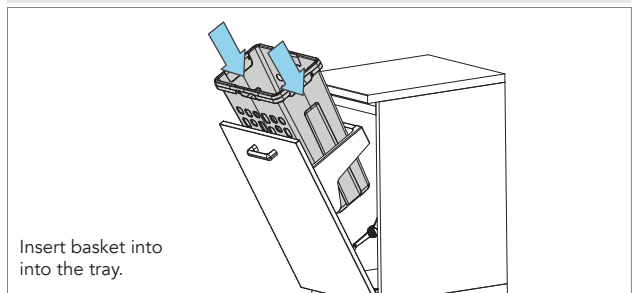
Assemble bin tray parts.

## BRACKET



Insert bin tray and screw to the door.

## BRACKET



Insert basket into the tray.

Note: Hamper door adjustments, made using bottom hinges. See left page (pg. 20) for adjustment instructions.